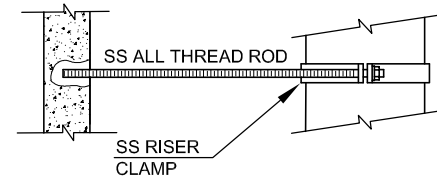
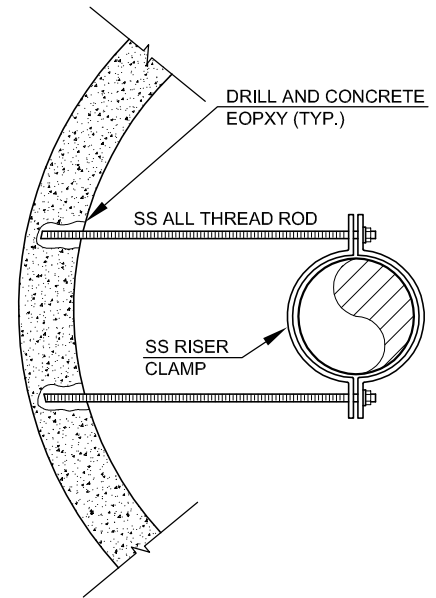


ATTACH PIPE TO MANHOLE WALL AT 3' INTERVALS UNLESS OTHERWISE APPROVED BY DISTRICT.

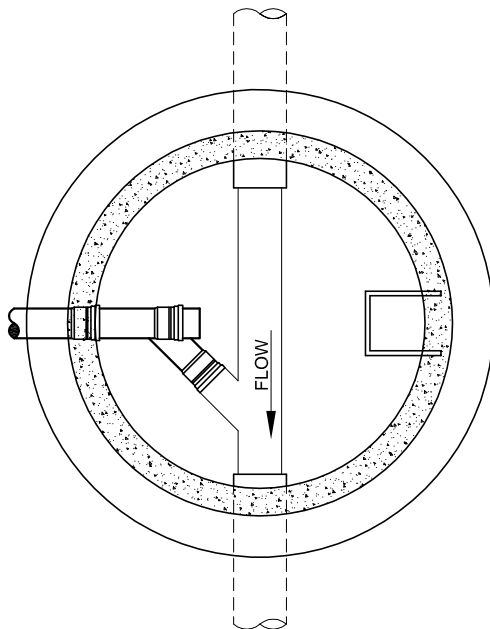
MANHOLE PROFILE



RISER SUPPORT PROFILE




RISER SUPPORT PLAN



MANHOLE PLAN

NOTES:

1. MANHOLE DIAMETER SHALL BE 5' MIN.
2. IF MORE THAN ONE DROP, DESIGN MUST BE APPROVED BY DISTRICT ENGINEER.
3. MANHOLE BODY TO BE CONSTRUCTED AS PER STANDARD PRECAST MANHOLE PER DWG. NO. S2
4. DIAMETER OF DROP PIPE SHALL NOT BE LESS THAN THE LINE PIPE DIAMETER.
5. INSIDE DROP SHALL BE CONSTRUCTED WHEN THE DROP INTO MANHOLE IS 2'-0" OR GREATER.
6. OUTSIDE DROPS ARE NOT ALLOWED UNLESS OTHERWISE APPROVED BY DISTRICT ENGINEER.

REV. DATE:	1/2009	INSIDE MANHOLE DROP
SCALE:	N.T.S.	
		DWG. NO.
NORTH TABLE MOUNTAIN WATER AND SANITATION DISTRICT 14806 WEST 52ND AVENUE GOLDEN, COLORADO 80403-1228		S3